

Synido

Voice100MK2

USER MANUAL

Follow us for the latest news:



关注我们，最新资讯、活动一网打尽：



哔哩哔哩
Synido森林岛



小红书
Synido森林岛



微信公众号
Synido森林岛

Audio Interface

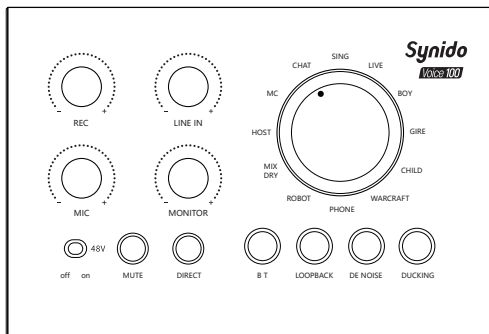
CONTENTS 目录

P1	/ WELCOME
P2	/ PACKING LIST
P3	/ PANEL DESCRIPTION
P6	/ APPLICATION SCENARIOS
P8	/ DESCRIPTION OF SUPPORTING SOFTWARE
P11	/ FAQ
P12	/ PRECAUTIONS/CUSTOMER SUPPORT
P13	/ RETURNS&WARRANTY/PRODUCT REGISTRATION

P15	/ 欢迎
P16	/ 包装清单
P17	/ 配套软件说明
P19	/ 应用场景
P21	/ 软件下载安装
P24	/ 常见故障
P25	/ 注意事项
P26	/ 售后服务

WELCOME

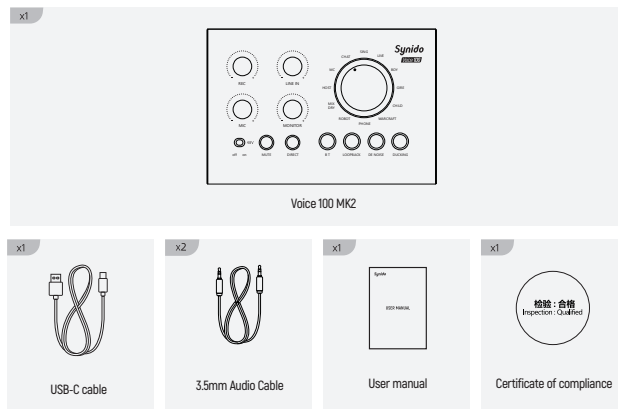
SYNIDO VOICE100MK2 is a singing sound card, built-in high-performance digital DSP chip, support voice, musical instrument mix, suitable for the personal podcast, playing.



Features:

- Drive-free design can plug-and-play quickly
- Metal body design could shield noise better
- DSP chip creates digital sound effects
- 48V power supply for professional recording
- One-click to ducking and noise reduction
- Support live streaming on mobile/computer
- Bluetooth accompaniment during mobile live broadcast
- The control panel is simple and easy to use

PACKING LIST



PRODUCT SPECIFICATION

Product Model: Voice 100 MK2

Product Size: 160*108*52mm

Channel: 2In/20Out

Sample Rate: 16bit/44.1kHz

DAC Dynamic Range: 105dB

SNR: ≥105dB[music] ≥96dB[record]

Output Power: 125mW, 32Ω[Earphone]

Product Weight: 462g

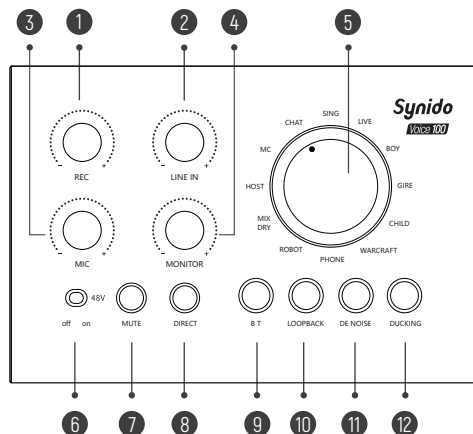
Scan the QR

Register your product for exclusive benefits!



PANEL DESCRIPTION

Front Panel:



1. **REC VOL:** Volume adjustment for USB-C recording to computer.
2. **LINE IN:** Line input, instrument input volume adjustment.
3. **MIC VOL:** Local microphone volume adjustment.
4. **MONITOR:** Local Monitor volume adjustment.
5. **FX:** Types of DSP effects
6. **48V:** The red indicator lighting up indicates the 48V phantom power being engaged.
7. **MIC MUTE:** MIC MUTE
8. **DIRECT:** Real-time monitoring
9. **BT:** If the blue indicator light is steady on, it means that the Bluetooth is connected. If it is flashing, it means that the Bluetooth is not connected. If it is off, it means that the Bluetooth is turned off.

10. LOOP BACK:

Mixing the audio played by the computer with the volume input from the microphone/instrument of the sound card, and then outputting it back to the computer.

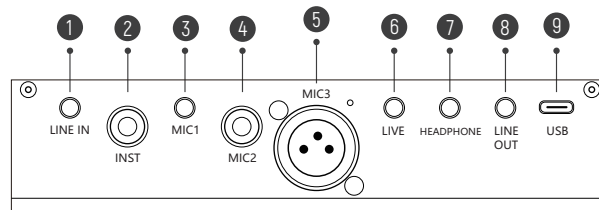
11. DE NOISE:

Short press the button to switch the level of denoise. 3 levels to set the denoise. It will indicate blue, green, and red light separately from the first level to the third level.

12. DUCKING:

When the button light is on, the computer or other input accompaniment gives way for the microphone to pick up the sound, and the microphone sound is emphasized. When the microphone is not picking up the sound, the accompaniment will continue to play

Back Panel:

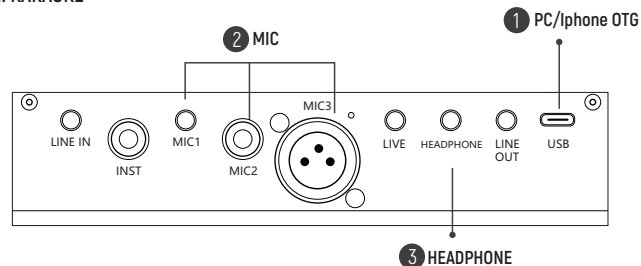


1. **LINE IN:** 3.5mm accompaniment interface, supporting external accompaniment sound source, and mobile accompaniment input.
2. **INST:** 6.35mm musical instrument interface, supporting musical instrument input such as electric guitar and electronic keyboard.
3. **MIC1:** 3.5mm microphone interface, supporting connection with an electret condenser microphone.
4. **MIC2:** 6.35mm microphone interface, supporting connection with dynamic microphone.

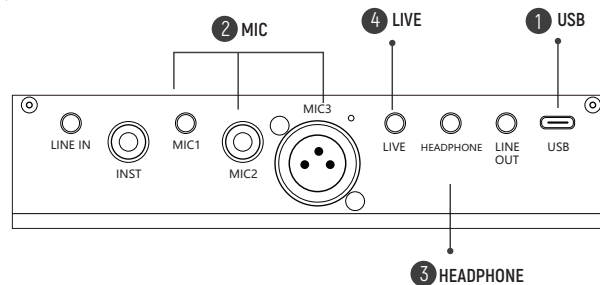
- 5. **MIC3:** XLR microphone interface, supporting connection with 48V large-diaphragm condenser microphone.
- 6. **LIVE:** 3.5mm live broadcasting interface, supporting connection with an external mobile phone/tablet for live broadcasting.
- 7. **HEADPHONE:** 3.5mm headphone jack, supporting connection with monitor headphones
- 8. **LINE OUT:** 3.5mm speaker interface, supporting connection with external passive speaker/speaker power amplifier.
- 9. **USB-C:** USB Type-C cable interface, supporting connection with computer/ phone.

APPLICATION SCENARIOS

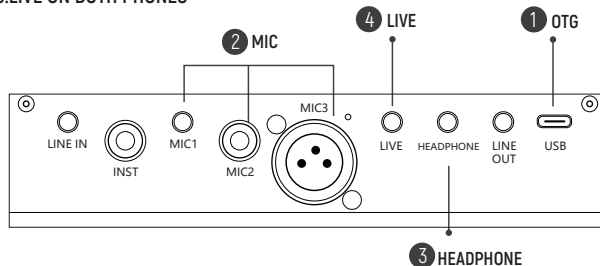
1. KARAOKE



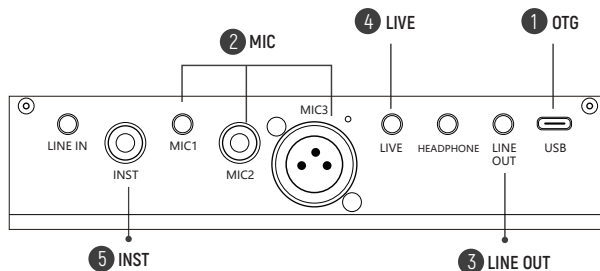
2.LIVE



3.LIVE ON BOTH PHONES



4.PLAY THE MUSICAL INSTRUMENT



DESCRIPTION OF SUPPORTING SOFTWARE

1.MAC

Step 1: Software Download

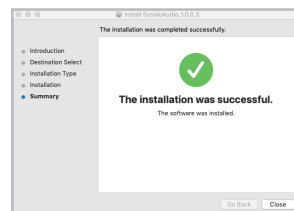
Please download the software from the official website:
www.synido.com/support/downloads

Step 2: Connect the Sound Card

Use the USB data cable included in the package to connect Synido Voice 100 to the computer.

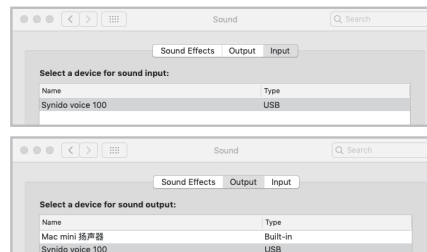
Step 3: Software Installation

Double-click the downloaded driver and follow the instructions to install it.



Step 4: System Settings

After confirming that the computer has recognized Synido Voice 100, users shall enter System Preferences → Sound → Output/Input, select Synido Voice 100 as the input and output device.



2.Windows

Step 1: Software Download

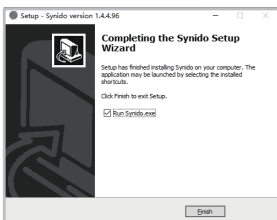
Please download the installation driver from the official website:
www.synido.com/support/downloads

Step 2: Connect the Sound Card

Use the USB data cable included in the package to connect Synido Voice 100 to the computer.

Step 3: Software Installation

Double-click the downloaded driver and follow the instructions to install it.



Step 4: System Settings

After confirming that the computer has recognized Synido Voice 100, the user needs to right-click the loudspeaker icon in the notification area, open the sound settings and find the audio device list, and then select Synido Voice 100 as your input and output device.

Input	Output
Choose your input device	Choose your output device
<div>Microphone (Synido voice 100) ▼</div>	<div>Speakers (Synido voice 100) ▼</div>
<small>Certain apps may be set up to use different sound devices than the one selected here. Customize app volumes and devices in Windows Settings.</small>	<small>Certain apps may be set up to use different sound devices than the one selected here. Customize app volumes and devices in Windows Settings.</small>

Synido Voice 100 PC Control Panel can be downloaded on:

www.synido.com/support/downloads

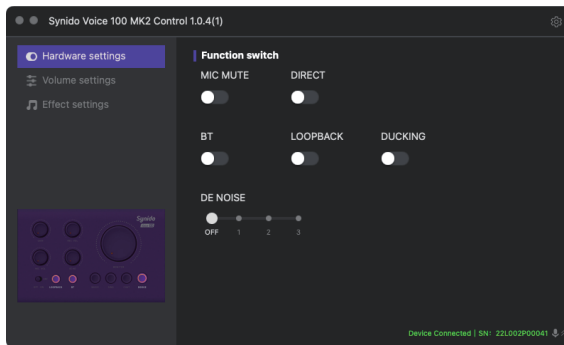
This application will let you manage all the special functions that are not directly accessible on the Synido Voice 100 device.

These include:

- Play and save the recording or settings
- Accurately enter the number to set the volume

The software is compatible with Windows 7+ and Mac OSX 10.8+.

In order to use the software, you must connect the Synido Voice 100.



FAQ

Q: Why the indicator does not light up after the device connects to the computer?

A: Please check if the USB port of the device is properly plugged in.

Q: Why is there no sound when playing music on the computer?

A: ① Check if the computer audio input and output device equipped with this device;

Input	Output
Choose your input device	Choose your output device
<div>Microphone (Synido voice 100)</div>	<div>Speakers (Synido voice 100)</div>
<small>Certain apps may be set up to use different sound devices than the one selected here. Customize app volumes and devices in advanced sound options.</small>	<small>Certain apps may be set up to use different sound devices than the one selected here. Customize app volumes and devices in advanced sound options.</small>

- ② Check if the headphone connection to the corresponding jack of the sound card;
- ③ Check if the headphone fully inserted into the jack;
- ④ Check if the headphone volume adjusts to the minimum sound.

Q: Why is there no sound from the microphone?

- A: ① Check the working mode of the sound card, the microphone is silent in the music mode;
- ② Check if the microphone volume knob adjusts to the minimum;
 - ③ Check if the monitor volume knob adjust to the minimum;
 - ④ Check if the 48V power supply switch of the large-diaphragm microphone is turned on.

Q: Why is there no sound in the live broadcast on the mobile phone, but the mobile audio is played out?

- A: ① Check if the connecting cable corresponds to the sound card function interface;
- ② Check if the mobile phone recognizes the audio device;
 - ③ Re-plug the cable corresponding to the mobile phone live broadcast.

PRECAUTIONS

1. Avoid strong collisions and do not drop the device.
2. The device will be corroded by liquids causing malfunctions, short circuits, or incorrect operation. Please use a soft dry cloth to wipe the liquid spilled on the device.
3. Do not expose the device to the sun, or place it in extreme environments such as high temperatures and bad ventilation. Overheating may cause the device to malfunction.
4. When the product is not in use, please turn off the power and store it in a dry and ventilated place.
5. Please use the original audio cable and data cable of the product.
6. When connecting or removing various cables, please take the connectors and do not pull the cables to avoid short circuits or damage to the device.
7. Do not disassemble or modify without authorization, and any product function and safety issues arising therefrom shall be borne by the customer.
8. Under normal conditions of use, the body will generate slight heat, which is normal.

Attention: Please do not connect a 5V power microphone to the 48V power microphone port. There is a risk of damaging the microphone.

CUSTOMER SUPPORT

For more FAQ, visit Support Center: [Synido.com/support](https://synido.com/support)

or scan the QR code

or email us through cs@synido.com

WORKING TIME: 9:00 - 18:00 (MONDAY TO FRIDAY, GMT+8)



RETURNS&WARRANTY

Synido One-Year Limited Warranty Policy

All warranties begin from the date the product is purchased. If a product and accessories develop a fault during the warranty and the fault is due to a quality issue rather than your own breakage or misuse then Synido will repair, replace or refund your product at its own discretion. Defective items MUST BE reported and returned to us within the warranty period (and in the original packaging, if possible). You must tell us what the defect is provided with pictures and videos. Shipping charges may apply, depending on the location. Synido does not warrant against normal wear and tear, or damage caused by accident or abuse. To fix such issue will be charged extra service fee. Synido assumes no liability for any accident, injury, death, loss, or other claim related to or resulting from the use of this product. You should afford the shipping fee of returning product to us, and we offer free shipping of your replacement or exchange product.

After One-Year Warranty

For post warranty repair, the procedure is the same as outlined in One-Year Limited Warranty. However, you are responsible for shipping charges both ways and the current price of part(s) used in the repair.

Return Instructions

Cut out the RMA FORM on Page 16 and include the completed RMA Form in your package, along with the item(s) to begin the return process. We recommend selecting a trackable shipping method and insuring the package. Return shipping costs are the responsibility of the customer.

Please do not return any hardware back to Synido without a valid and authorized Return Material Authorization (RMA) number.

In the instance of Synido giveaways, gift, contest, and promotional items, the products cannot be returned for cash value or store credit.

PRODUCT REGISTRATION

Go to [Synido.com/support/product-registration](https://synido.com/support/product-registration) or scan the QR code to activate your Synido warranty now! ➡

Make sure to have your basic purchase information with you (Date, Order Number, and Vendor).

Synido offers a full 1-year warranty upon sign-up. Make sure to sign up within 90 days of purchase.



Synido

RETURN MATERIAL AUTHORIZATION (RMA) FORM

Please use the form below for returns and complete all of the sections so we can promptly process your return. Contact Synido Technical Support cs@synido.com to request an RMA number.

Order Number & Purchase Date:

Store of Purchase:

Product Name & Model Number :

Product Serial Number:

Customer Ship-to Address:

Contact Name:

Contact Phone, Fax, and E-mail:

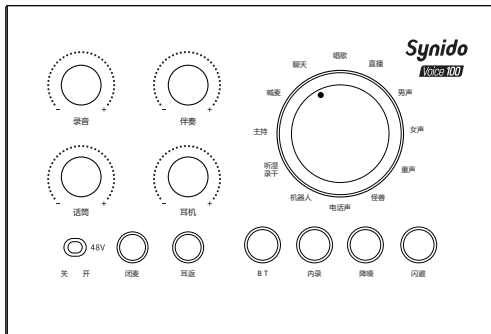
Problem Description:

RMA:

P.S. Please also mark RMA number in the outside shipping carton.

欢迎

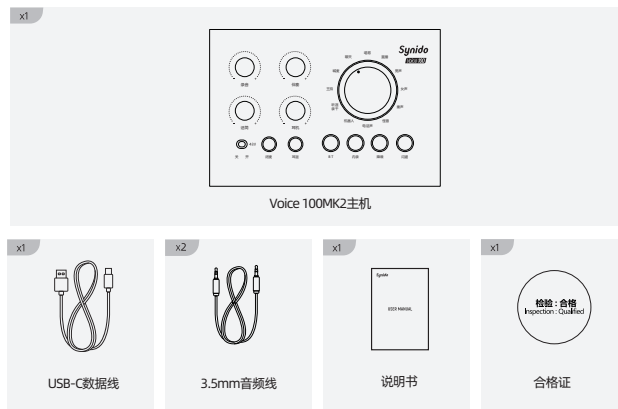
Synido Voice 100MK2是一款唱歌声卡，内置高性能数字 DSP 芯片，支持声音、乐器组合，适合个人播客、演奏



产品特点：

- 免驱动设计，即插即用
- 金属机身，屏蔽杂音
- DSP数字混响、12种适用音效
- 支持48V大振膜麦克风录音
- 支持蓝牙、线路音乐伴奏
- 支持手机/电脑直播
- 支持一键降噪、一键闪避
- 支持一键内录、一键耳返监听

包装清单



产品规格

产品型号: Voice 100 MK2

产品尺寸: 160*108*52mm

通道: 2In/2Out

采样率: 16bit/44.1kHz

信噪比: $\geq 105\text{dB}(\text{music})$ $\geq 96\text{dB}(\text{record})$

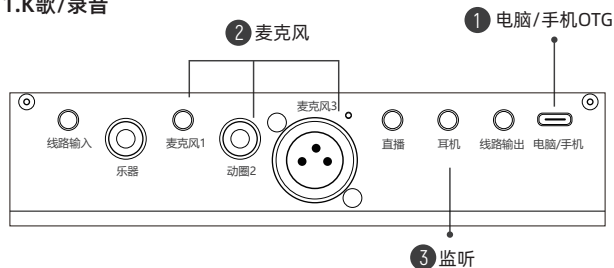
动态范围: 105dB

最大输出功率: 125mW, $32\Omega(\text{Earphone})$

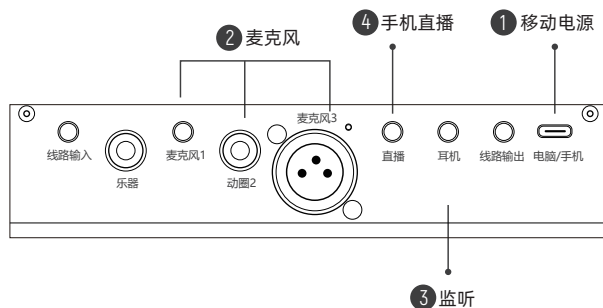
净重: 462g

应用场景

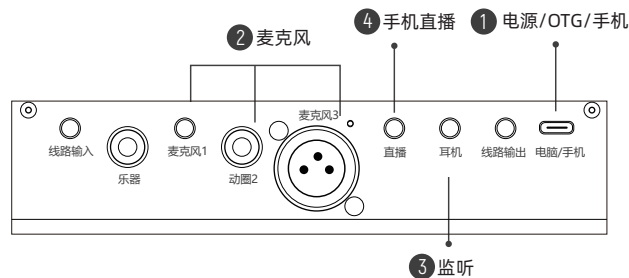
1.K歌/录音



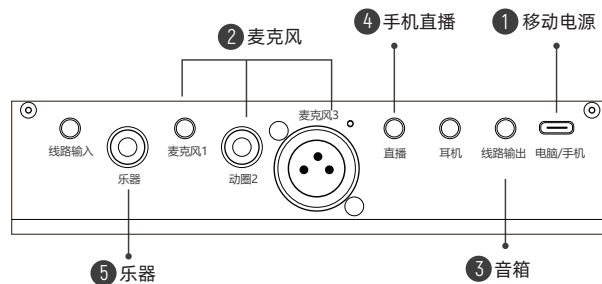
2.直播



3.双手机直播



4.乐器演奏



软件下载与安装

1.MAC电脑

第一步:软件下载

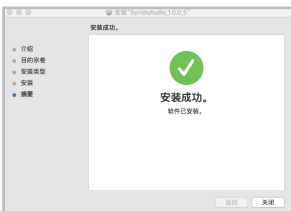
请前往官网下载软件:www.synido.cn/support/downloads

第二步:连接声卡

使用包装内随附的USB-C数据线连接设备到电脑

第三步:软件安装

双击下载好的软件,按照指示进行安装



第四步:系统设置

确认设备已被电脑识别到后,前往系统偏好设定→声音→输出/输入,找到音频设备列表,选择Synido Voice100为你的输入输出设备



2.Windows电脑

第一步:软件下载

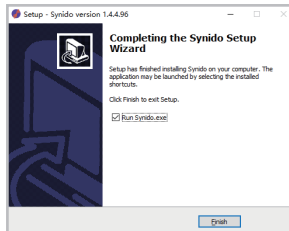
请前往官网下载软件:www.synido.cn/support/downloads

第二步:连接声卡

使用包装内随附的USB-C数据线连接设备到电脑

第三步:软件安装

双击下载好的软件,按照指示进行安装



第四步:系统设置

确认设备已被电脑识别到后,右键系统托盘中的扬声器,打开声音设置,找到音频设备列表,选择Synido Voice 100为你的输入输出设备



Voice 100控制面板可在www.synido.cn/support/downloads上下载。安装该软件后可以使用和调节一些无法在Voice 100硬件设备上使用的特殊功能, 包括:

- 便携式录音机
- 精确输入数字设置音量

该软件兼容Windows 7及以上版本和Mac OSX 10.8及以上版本。要使用软件, 必须连接Voice 100设备。



常见故障

Q: 设备连接电脑后指示灯不亮?

A: 请检查设备USB接口是否有插好。

Q: 电脑播放音乐无声?

A: ① 检查电脑音频输入输出设备是否设置本装置;



- ② 检查耳机是否连接上声卡对应插孔;
- ③ 检查耳机是否完全插入插孔;
- ④ 检查耳机音量是否调节到最小无声音。

Q: 麦克风无声?

- A: ① 检查声卡工作模式音乐模式下麦克风无声;
- ② 检查麦克风音量旋钮是否控制到最小;
 - ③ 检查监听音量旋钮是否控制到最小;
 - ④ 检查大振膜话筒检查48V供电开关是否打开。

Q: 手机端直播无声、手机音频外放?

- A: ① 检查连接线材是否对应声卡功能接口;
- ② 请检查手机是否识别到音频设备;
 - ③ 重新插拔手机直播对应线材。

注意事项

1. 避免强烈碰撞，禁止摔落装置。
2. 液体侵蚀设备会造成故障、短路或错误操作。请使用柔软的干布擦拭溅到设备上的液体。
3. 请勿将本机曝晒，或放置于高热、通风不良等极端环境下。过热可能会导致本机故障。
4. 产品在不使用时，请关闭电源存放在干燥通风处。
5. 请使用产品原装音频线和数据线。
6. 当连接或是移除各种连接线时，请拿取连接头，切勿拉扯连接导线，以避免造成短路或伤害装置本身。
7. 不得擅自拆卸和改装，由此产生的任何产品功能和安全问题由客户自身承担。
8. 正常使用状况下，机体会产生轻微热度，此为正常情况。

警告：请勿将5V供电麦克风风连接到48V供电麦克风接口上，存在损坏麦克风风险。

售后服务

若您有任何售后服务需求，微信扫描下方二维码，联系官方客服：

Synido小助手 🐾

工作时间：

10:00-19:00（周一至周五）

